

Life Sciences in London and the Greater South East of England (GSE)

MedCity can help you navigate and access different parts of the academic, NHS and industrial life sciences and healthcare environment across the golden triangle of Cambridge, London, Oxford and the greater south east region of England.

office@medcityhq.com
+44 (0)20 3179 8100

medcityhq.com
@MedCityHQ



Research rich ecosystem

Home to:

3,700+ companies (medcitymap.com)

193,000+ employees in GSE

19 out of the top 20 global pharmaceutical companies



World class research centres

Alan Turing Institute UK's new national institute for data science

Francis Crick Institute Europe's largest centre for biological research and innovation

Harwell Oxford Campus

Imperial White City

Wellcome Sanger Institute, Cambridge

UK Cell and Gene Therapy

Manufacturing Centre



Cutting edge research projects

The 100,000 genomes project

Alzheimer's Drug Discovery Alliance

Rosalind Franklin Institute

Discover - North West London Health Research Register

East London Genes and Health

MRC - NIHR National Phenome Centre

Fantastic funding

£813.71m+ VC investment in 2018¹

15% increase in funding since 2017¹

30+ specialist life sciences VC funds



Incubators

50+ incubators, accelerators and innovation centres

100,000m²+ incubator office and lab space

Access to talent

Four of the world's top 20 universities, and **three** of the world's top 10 universities³

192,000+ students and **57,800+** PhD students (2017/18)⁴

More than **21,000** qualifiers in 2017/18⁴

Largest and most diverse life sciences human resource pool in Europe



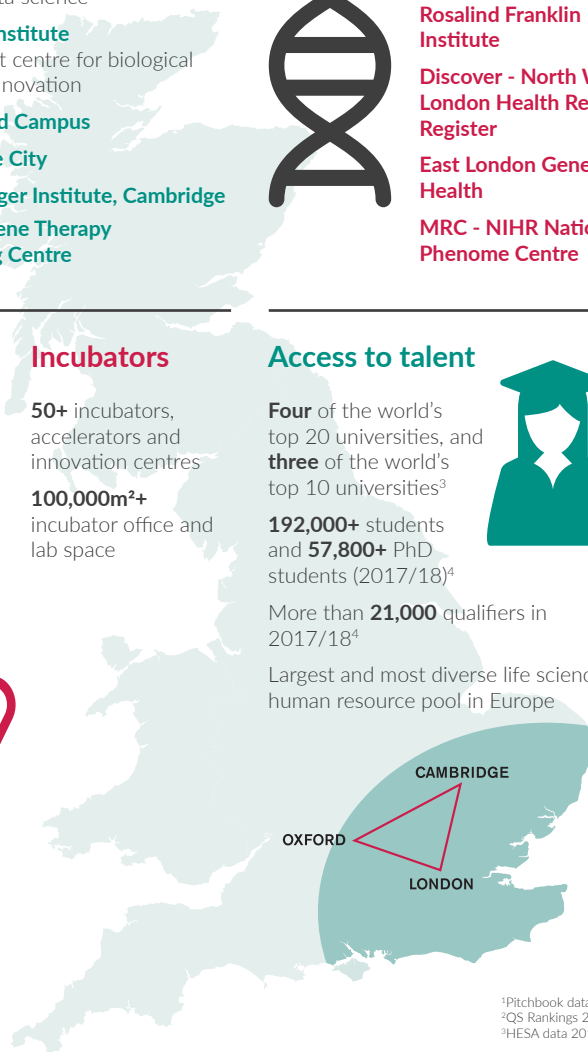
A clinical trial hotspot

7,000+ commercial clinical trials (2012-18)

45,000 participants in clinical trials (2012-18)

Access to over **23m** patients registered with the NHS. London alone provides an unrivalled diverse patient base of over **8m**, **1/3** born outside the UK

For more information on clinical trials in the region, please visit medcityhq.com/clinical-trials



¹Pitchbook data
²QS Rankings 2019
³HESA data 2017/18